

for St Mary's, Burwell with St Etheldreda and the Holy Trinity, Reach

A Summer of Pilgrimage

Pilgrimage is an ancient practice, that seems to be having something of a revival, with many undertaking the famous Camino in northern Spain, to Santiago de Compostela, and a new TV series of celebrity pilgrims travelling through the North-East. The Church of England has produced a series of reflections for this summer, based on the lives of English Anglo-Saxon Saints. Churches are being encouraged to consider how they might be Pilgrim Places.

What is Pilgrimage? For many, it is associated with special journeys to holy places, with the journey by foot often a significant part of the experience. We can also think about life as a journey, from birth to death, with the invitation from Jesus to live that life as pilgrims, following purposefully through life, knowing that God journeys with us through every season of life. The early Christians called themselves 'Followers of the Way' and pilgrimage remains at the heart of the Christian faith.

Over the summer months, we will be engaging with the theme of Pilgrimage, using resources from Faith in the North, along with the booklet of daily readings. There are Being a Pilgrim prayer cards, and a small group resource called 'On the way – exploring life as God's Pilgrim People'. There are also ideas for pilgrim walks or trails around our church buildings and the local area.

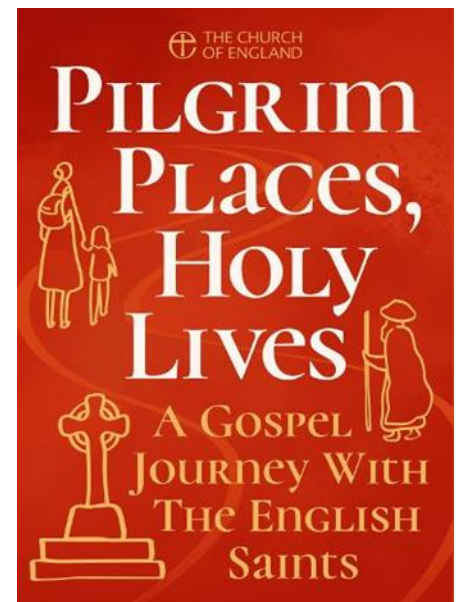
Lots to think about and I would love to hear from anyone who would like to help us think about how we can use some of these resources, or would like to host or join a small group. I have lots of ideas but no firm plans yet, so please speak to me if you are interested. The daily reading booklets will be available from the end of May.

With every blessing, as you continue on your journey.

Eleanor Williams



Being a Pilgrim prayer cards reflecting on the lives of Anglo-Saxon Saints



Daily Readings – 20 booklets available at £3 each. The readings are available on the Everyday Faith app from May 25th for 90 days.

Installation of the Right Reverend Sarah Clark as the Bishop of Ely

Bishop Sarah will be welcomed and installed at Ely Cathedral on Sunday 21st June 2026. This service will be live-streamed.

Please pray for Bishop Sarah

We praise and thank you, God of the journey, for all your gifts to us in the past.

We look to you as fellow traveller and faithful companion on the way ahead.

Strengthen, bless and guide Bishop Sarah by your Holy Spirit as she prepares for this calling, that with her we may serve you as generous and visible people of Jesus Christ our Lord. Amen.



From the Parish Registers

Baptism

We welcome

Luke Bryant

Funerals

Rest in Peace

Hilary Sage

Don Cope



Building Carer
Friendly Communities



St Mary's Church Burwell

Annual Carers' Service

to thank and support unpaid carers

Sunday 7th June 2026

at 3pm, followed by tea

**with special guest Charlotte Cane
MP for Ely & East Cambridgeshire**

All very welcome



St Mary's Burwell
St Etheldreda's Reach
Loving God, Loving People

Carers Week
is an annual awareness campaign
to celebrate and recognise
the vital contribution made
by the UK's 6.5 million carers.
For more information visit carersweek.org

Book Exchange

For a couple of weeks from Sunday 24th May there will be free (second hand) books available in the church themed generally on Faith, Hope and Charity.

If you have any books that you no longer want that you could contribute please do bring them along or let Angela know and she can collect. And please help yourself to anything of interest when they are there. The books to borrow continue at the back of the church too.

Angela Bellis

ELY CONSORT

PSALMS, SPIRITUALS & SONNETS

John Rutter - *Psalmfest*

James Bassi - *Harpsonnets*

Jack Halloran - *Witness*

Moses Hogan - *The battle of Jericho*

Norman Luboff - *Were you there?*

Anne Reece - *piano*

The Quintessential Ensemble

Matthew Rudd - *conductor*

SATURDAY 27TH JUNE 7.30^{PM}

ST MARY'S CHURCH, BURWELL

Tickets: £20 (U18's free)

www.ticketsource.co.uk/elyconsort or on the door
and in Burwell from CentrePeace, Post Office & Tina's



2026 [f](https://www.facebook.com/elyconsort) [i](https://www.instagram.com/elyconsort) [t](https://www.tiktok.com/@elyconsort) [y](https://www.youtube.com/channel/UCylyconsort.org.uk) [in/@elyconsort.org.uk](mailto:info@elyconsort.org.uk) 2026

Ely Consort Concert Program

Psalmfest will be the major choral work; this is a collection of varied psalm settings showcasing the full range of **John Rutter's** music, amply demonstrating why he is loved by choirs and audiences alike - you can expect beautiful melodies, joyful rhythms and dramatic climaxes. **Psalmfest** is accompanied by **The Quintessential Ensemble**, adding even more colour to this wonderful piece. The programme also includes three traditional Spirituals, arranged in very different styles for unaccompanied choir, culminating in a highly energetic version of the Battle of Jericho. In addition to instrumental items performed by **The Quintessential Ensemble**, the programme is completed by a performance of **James Bassi's Harpsonnets**; as the name suggests, this is a setting of **three sonnets by Shakespeare**, accompanied by harp.

St Mary's Church Fete

Not long to go now and it promises to be another fun day bringing the community together. Keep praying for a sunny day!

This year we have a number of craft stalls, along with cream teas, messy church tent, bric-a-brac, raffle, tombola, plants, cakes, Splat the Rat, Human Fruit Machine, jewellery, BBQ, ice-creams, a local author promoting his books (Burwell Museum), books and jigsaws (Centre Peace), Catch-a-Duck, Bowling for a Pig (?), jewellery making and others I may have missed! If we get inundated with volunteers there is potential to put on a few other stalls.

We still want donations for the tombolas, scones, jam and cream for the cream teas. We would also like lots of cakes (ingredient lists will be needed for each bake) to sell. Bric-a-brac donations should be brought to the fete on the day and **volunteers are still needed for helping with the cream teas and other stalls, so please get in touch if you can help.** Jo Proctor. llm@stmarysburwell.org.uk



Ely Cathedral Home & Garden Show Days & Times

Friday 9.30am-1pm, 1pm-4.30pm, 6.30pm-9pm sessions

Saturday 9.30am-1pm, 1pm-4.30pm sessions

Pre-Booked Tickets: £10 (£5 for children aged 3-15)

TICKETS ON THE DOOR: £12 (£6 children aged 3-15)

More information and ticket booking on Ely Cathedral's website <https://www.elycathedral.org/>

Report on Annual Parochial Church Meeting (APCM) 2026

This year's APCM on 26th April was well attended. The Annual Report, which had been circulated in advance, includes all the statutory reports in detail. You can view it online at <https://www.stmarysburwell.org.uk/about-us/newsletters/annual-reports>. Paper copies are also available. The meeting was devoted to the election of officers and PCC members and additional details about church life. Churchwardens are elected yearly and the usual maximum period of service is 6 years. PCC members are elected for 3 years. Wendy Smith was re-elected as churchwarden. Kathy and Simon Ogilvie, stood down as PCC members and three new PCC members were elected: Sarah Gwynn and Kathryn and David Sanders. At the first PCC meeting, Kevin Powell was appointed as Churchwarden's Assistant, along with Steve Martin and Caroline Smith. We pray for all the PCC members and give thanks for their hard work.

The various church officers reported that all the routine matters relating to the running of the church had progressed well this year. The PCC met regularly with good attendance; the parish is fully up to date with the requirements for Safeguarding Training and DBS checks; routine maintenance was carried out on both church buildings and the financial systems were working well. The PCC had only a small deficit this year, which was covered out of reserves. The number of people attending all the regular services and events remained stable, as did the number on the church electoral roll. Wendy reported that the boundary walls at Reach were substantially repaired and rebuilt this year. She also said that work had begun on plans for new heating and lighting in St Mary's and that fundraising would start soon.

In answer to a question about the Deanery Synod, Eleanor said that our deanery comprises 28 churches in 7 benefices in the local area. Eleanor is currently Rual Dean and Simon Ogilvie is the Deanery Treasurer. The Deanery Synod is part of the administrative structure of the Church of England, Clergy meet regularly and the parishes share ideas and offer each other support. Deanery Synod representatives are elected every three years, and this year Christine Fleming and Jo Proctor were re-elected.

Eleanor spoke about looking back over her 15 years in the parish, as shared in last month's Contact magazine. She reflected on the metaphor in 1 Corinthians 3 of a building, the Temple of the Holy Spirit, and how we are helping each other to better be that Temple. She thanked all those who had worked alongside her over the years and all the congregation for their contributions to our common life together.

This year, the Admission of Churchwardens service will be in the Cathedral on June 14th, and all are welcome to support Wendy at that service.



The Church of England
Diocese of Ely

Admission of Churchwardens 2026

- Sunday 14 June
- Refreshments in the Lady Chapel from 3pm,
Admission service from 4pm
- Ely Cathedral
- elydiocese.org/admission

All churchwardens will be admitted to office during this special service at Ely Cathedral.

Groups for Children, Young People and Families



If you'd like to find out more about joining any of these groups, or about becoming a volunteer helper or supporting us in prayer and other ways, please speak to Eleanor, Paula or Jo.



Environment Matters



Could you spend ten minutes counting pollinators in your garden or public space? Following this link will provide useful pointers of what to do: www.ukpoms.org.uk Recording your findings formally in this way is helpful in providing "citizen science" data. But if you do not feel confident enough in your insect ID to participate this time, then there is still great value in carrying out your own informal observations.

Just find some flowers (native wildflowers or garden cultivars). Ensure they are in the sun. Find somewhere comfortable, nearby, from which to observe, and then spend 10 minutes (or a timespan to suit you), looking out for pollinating insects visiting these flowers. You may choose to record these visiting pollinators, in writing or by photography. Or you can just sit and enjoy, a good way of becoming more aware of our vital pollinators, but also of being mindful - of living in the moment, and of considering the richness of God's Creation. And then spare a thought for what more you may be able to do to help these vital insects.

Caroline Smith



In case you have escaped hearing – it is the 150th anniversary of the Mothers' Union this year. The organisation was founded by Mary Sumner, a Vicar's wife, for mothers from all social classes in the parish to meet to support each other. MU is still expanding and being God's hands around the world, promoting and supporting stable family life. It now has over four million members in 84 countries worldwide and aims to support family life in communities both locally and globally.

A significant part of the work here in the Diocese of Ely, is campaigning on social justice issues relevant to families. Members actively support national campaigns like the 16 Days of Activism against Gender Based Violence. Caring for families for involves a wide variety of activities including providing holidays for families in need; supporting Littlehey and Whitemoor Prisons; collecting for 3 women's refuges, 2 hostels for young people, and knitting and sewing projects for hospitals, care homes, baby banks, Women's Refuges, the homeless, and overseas projects.

The MU is open to men and women and socialising is an important part of what we do. In Burwell we spent our last meeting discussing how we can celebrate this triumph of good, and I have some dates to share, so diaries out!

There is to be a service in St Paul's Cathedral on 10th June (all tickets sold) and a Garden Party open to all members in the Diocese (and beyond) in my garden (Mill Bungalow) on 24th June (no tickets, just turn up).

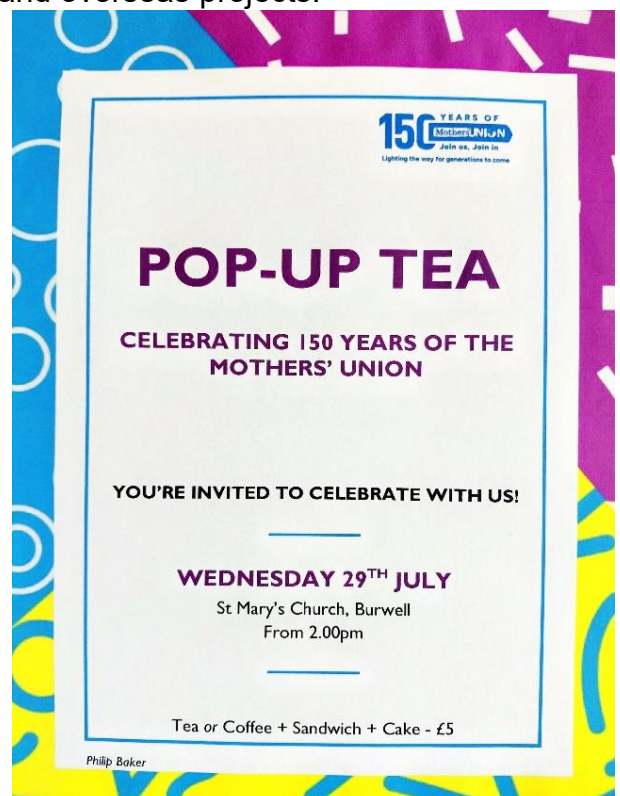
Then, on 29th July, we will be hosting a Pop-Up Tea in St Mary's from 2.00pm, please come and support us and enjoy a cuppa with a sandwich and piece of cake.

We will be in Ely Cathedral on 7th August for a combined Branches service, and finally, on Sunday 9th August, which fortuitously happens to be Mary Sumner Day, the Burwell Branch will be leading the Sunday morning service in St Mary's. So much to enjoy!

The only other item I will mention is that the next Fellowship Lunch at the Day Centre, open to all, will be on 10th June, book with me as usual.

If you are not a member but interested in the work of the Mothers' Union here in the UK and around the world and would like to know more, please contact me. We welcome women and men who support our aims, which relate to the Christian support of families and family life.

Philip Baker



What's on this month

10.00	Sunday 31st May Holy Communion at Burwell	Wed 3 Fri 5 Sat 6	10.30 10.00 9.00 14.00	Holy Communion at St Mary's Refresh Café at St Mary's Village Green Pray-ers St Mary's Fete
8.30 10.00 15.00	Sunday 7th June Trinity 1 Holy Communion at Reach Café Church at Burwell Carers' Service at Burwell	Wed 10 Fri 12 Sat 13	10.30 10.00 9.00	Holy Communion at St Mary's Refresh Café at St Mary's Village Green Pray-ers
10.00	Sunday 14th June Trinity 2 Holy Communion at Burwell	Wed 17 Fri 19 Sat 20	10.30 10.00 9.00	Holy Communion at Reach (also at Ness Court) Refresh Café at St Mary's Village Green Pray-ers
8.30 10.00	Sunday 21st June Trinity 3 Holy Communion at Burwell Holy Communion at Burwell	Wed 24 Fri 26 Sat 27	10.30 10.00 9.00 19.30	Holy Communion at St Mary's Refresh Café at St Mary's Village Green Pray-ers Ely Consort concert in St Mary's
10.00	Sunday 28th June Trinity 4 Holy Communion at Burwell	Wed 1 Jul Fri 3 Jul Sat 4 Jul	10.30 10.00 9.00	Holy Communion at St Mary's Refresh Café at St Mary's Village Green Pray-ers
8.30 10.00	Sunday 5th July Trinity 5 Holy Communion at Reach Café Church at Burwell			

WEEKLY GATHERINGS

We have a number of small groups meeting during the week, including:

Monday 7.30pm St Mary's Bellringers meet to practice most weeks (check pew sheet)

Friday 10.00am Refresh Café and lunch for babies, pre-school children & their grown-ups

Saturday 9.00am A Prayer Group meets at Village Green Coffee Shop

Please speak to Eleanor if you would be interested in joining a bible study group, or are wondering whether baptism and/or confirmation might be the next step for you on your faith journey.



CentrePeace

Opening Hours

Tuesday	10.00am—12.30pm
Wednesday	10.00am—12.30pm 2.00pm—4.00pm
Thursday	10.00am—12.30pm
Friday	10.00am—12.30pm
Saturday	10.00am—12.30pm

If you would like to volunteer in CentrePeace, please contact me,
Hazel Williams hwill66@icloud.com

**Pop-Up Pantry
at Burwell Day Centre
Usually 1st Friday of month
Friday 5th June
and Friday 3rd July
2.00 - 3.00pm**

***Check Facebook page
for updates***

**If you're struggling
to make ends meet,
you can pick up
a bag of groceries
No voucher needed
Voluntary £5 contribution**

**Pop-Up Pantry is working
towards reducing waste
and offers short life food
and more as is available**

Part of Burwell Food Support Group

Supporting St Mary's and St Etheldreda's

Could you support the work of our church by making a donation? There are various ways to do this.

At one of our services or events, you can give cash or a cheque, made payable to 'Burwell PCC' or use the card reader.

Alternatively, go to our website www.stmarysburwell.org.uk/donate

for information about how to make a single or regular donation by credit or debit card. You can also download forms to set up a Standing Order or a Gift Aid declaration.

For more details, please see our website or speak to our Gift Aid Officer, Ian Richards or Email: administrator@stmarysburwell.org.uk

Vicar

Rev'd Canon Dr Eleanor Williams

22 Isaacson Road 01638 741262

vicar@stmarysburwell.org.uk

Associate Priest

Rev'd Paula Spalding 07849 936085

associatepriest@stmarysburwell.org.uk

Duty days Wednesday, Friday and Sunday)

Priests in retirement

Rev'd David King

Rev'd Dr Roger Williams

Licensed Lay Ministers

Jo Proctor

Kevin Powell

Churchwardens

Wendy Smith 01638 741888

Churchwardens' Assistants

Stephen Martin 01638 742667

Caroline Smith

Administrator

Kathy Ogilvie

administrator@stmarysburwell.org.uk

We're also on Facebook

<https://www.facebook.com/stmarysburwell>

<https://www.facebook.com/messychurchburwell>

<https://www.facebook.com/centrepeaceburwell>

Keeping in Touch

We send the weekly pew sheet and monthly Contact magazine by email. There are usually a few spare paper copies in church.

Both the pew sheet and Contact are also available to download from our website: www.stmarysburwell.org.uk/about-us/newsletters/

**QR code for
church website
home page**



We welcome your contributions to Contact. Please do keep sending them!

Send to Pat Chalmers, Contact Editor at pat@patchtcs.co.uk

To join the circulation list, please fill in a Keeping in Touch form, available in our churches and on our website

Views expressed are those of the individual and not of St Mary's and St Etheldreda's PCC